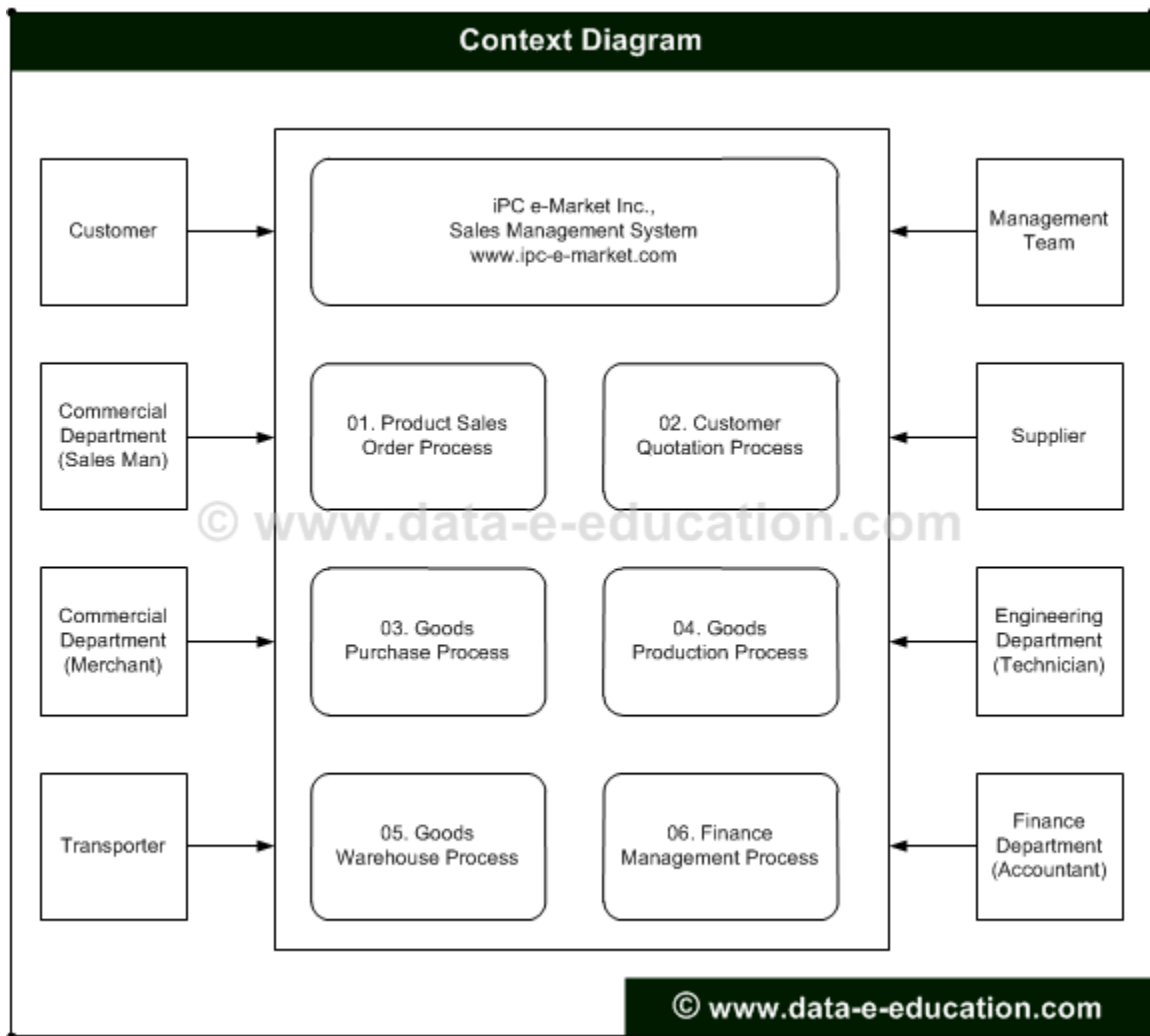


About iPC e-Market Inc.,

iPC e-Market Inc., is an Electronic and Computer Product Trader. iPC e-Market Inc., is formed and running with Administration, Commercial, Engineering, Warehouse and Finance Department. iPC e-Market Inc., is operating through Customer, Sales Man, Merchant, Supplier, Transporter, Technician, Accountant and Management Team.

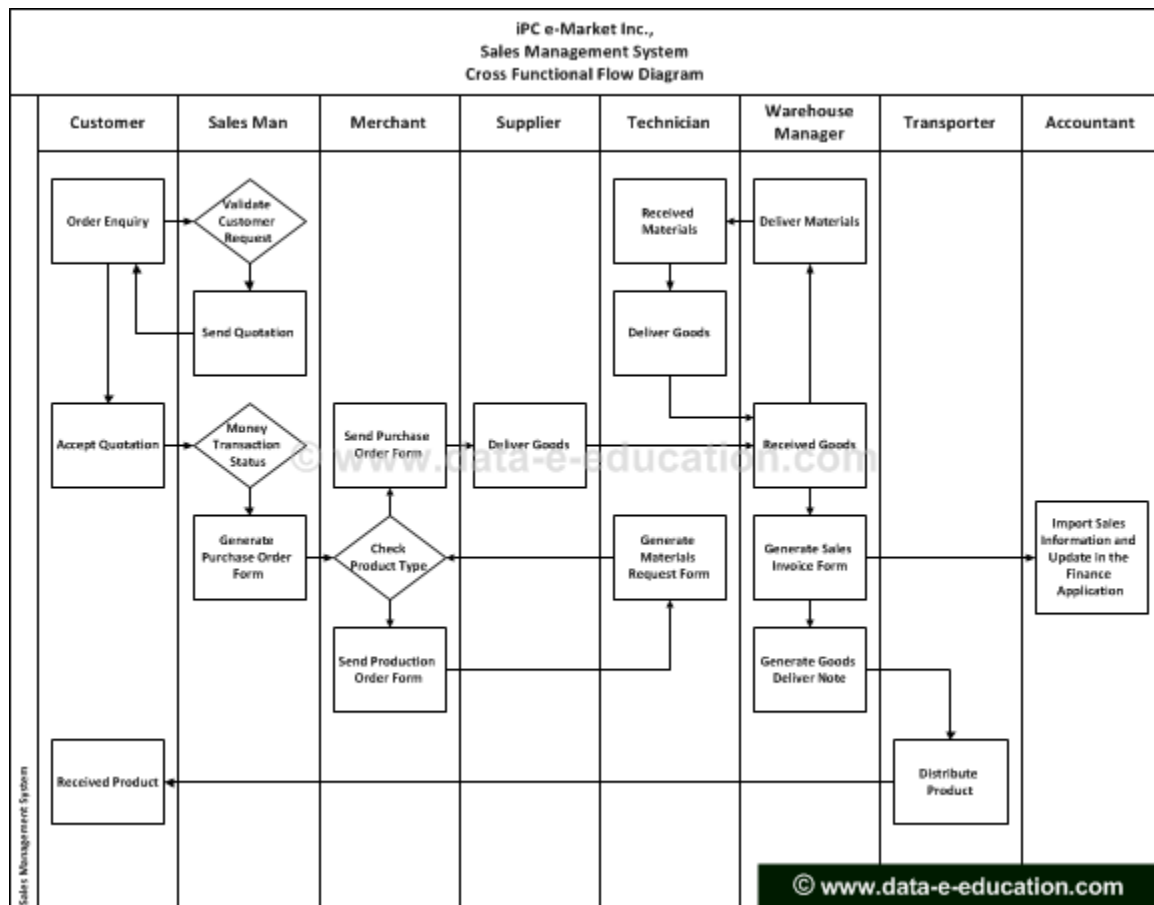
The iPC e-Market Inc., is marketing the Electronic Product through Television Advertisement and Tele Shopping Program. At present, iPC e-Market Inc., introduces an e-Business www.ipc-e-market.com web site to advertise the Electronic Product Information and to receive Online Order Enquiry Information.

The following Context Diagram is re-present you about iPC e-Market Inc., High Level Business Process Information.



IPC Process Flow Diagram

The following Cross-Functional Flowchart is re-presenting about www.ipc-e-market.com System and Application Functional Process along with Process Relationship, Functional Entity and their Responsibility of the Process. This Cross-Functional Flowchart designed with Typical Flowchart Symbols along with Swim Lane Symbol.



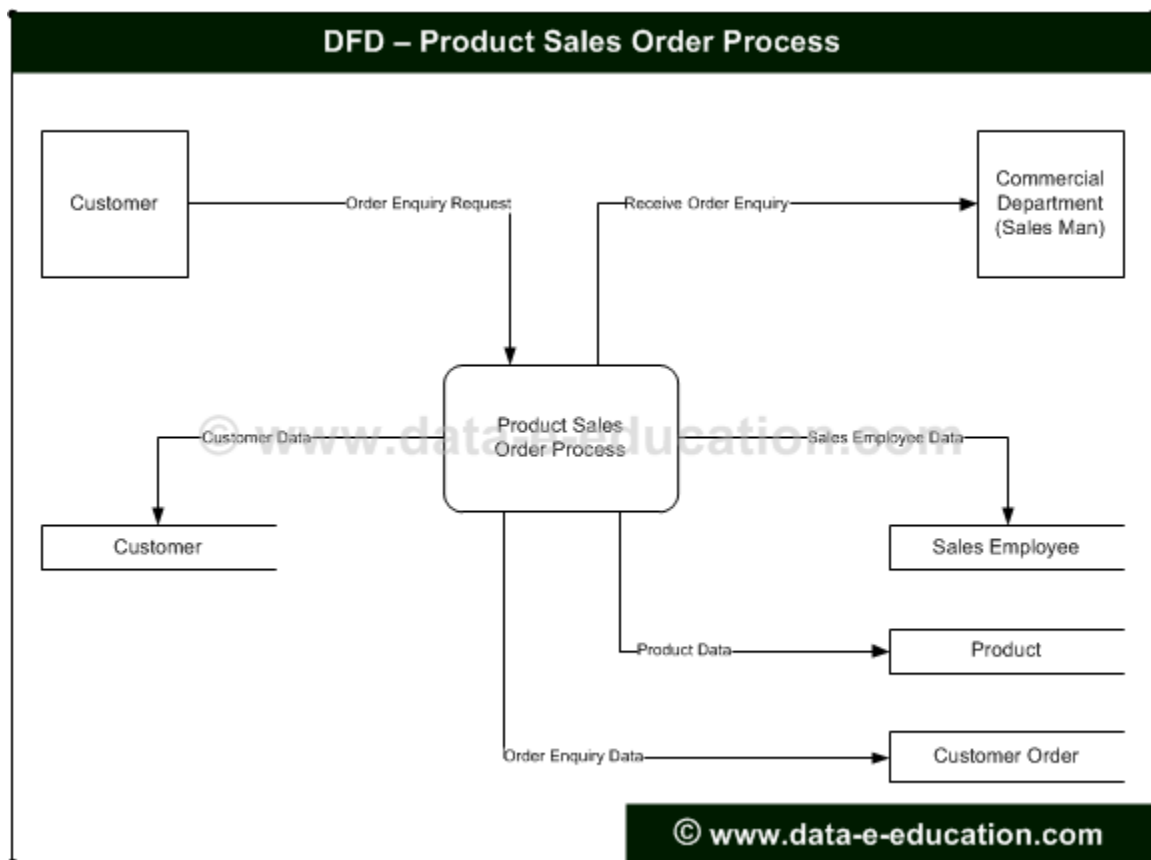
Product Sales Order Process

The www.ipc-e-market.com web site displays a List of Branded Company Computer(s) from e-Product-Catalog web page and Branded Company Computer Part(s) from e-Part-Catalog web page.

The Customer can select a List of Branded Company Computer(s) from e-Product-Catalog web page and then raise an Online Order Enquiry to iPC e-Market Inc., through online-order-enquiry web page.

According to the Customer Requirement, the Customer can select a list of Branded Company Part(s) from e-Part-Catalog web page to purchase an assemble computer and then raise the Online Order Enquiry to iPC e-Market Inc., through online-order-enquiry web page.

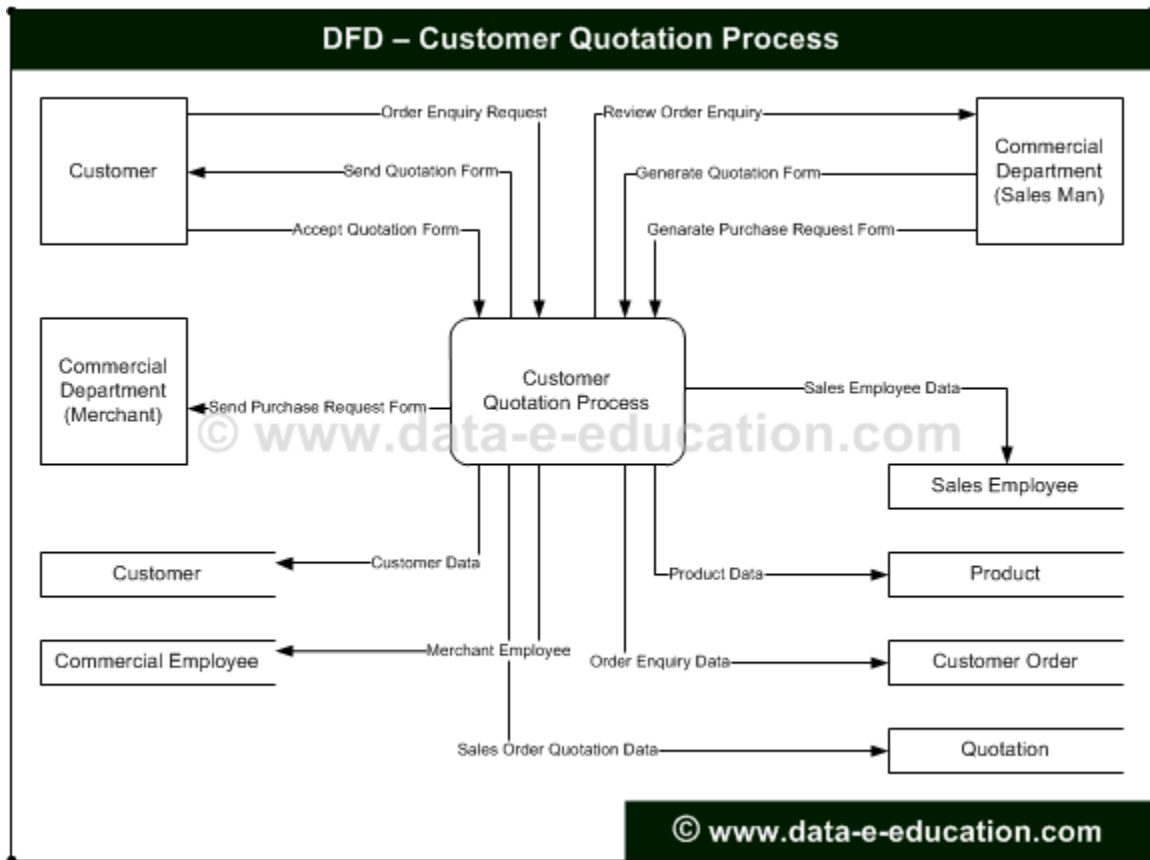
Periodically, the iPC e-Market Inc., Sales Employee should check the Online Order Enquiry from www.ipc-e-market.com web site. The following Data Flow Diagram is re-present you about Sales Order Request Process with Data File Information.



Customer Quotation Process

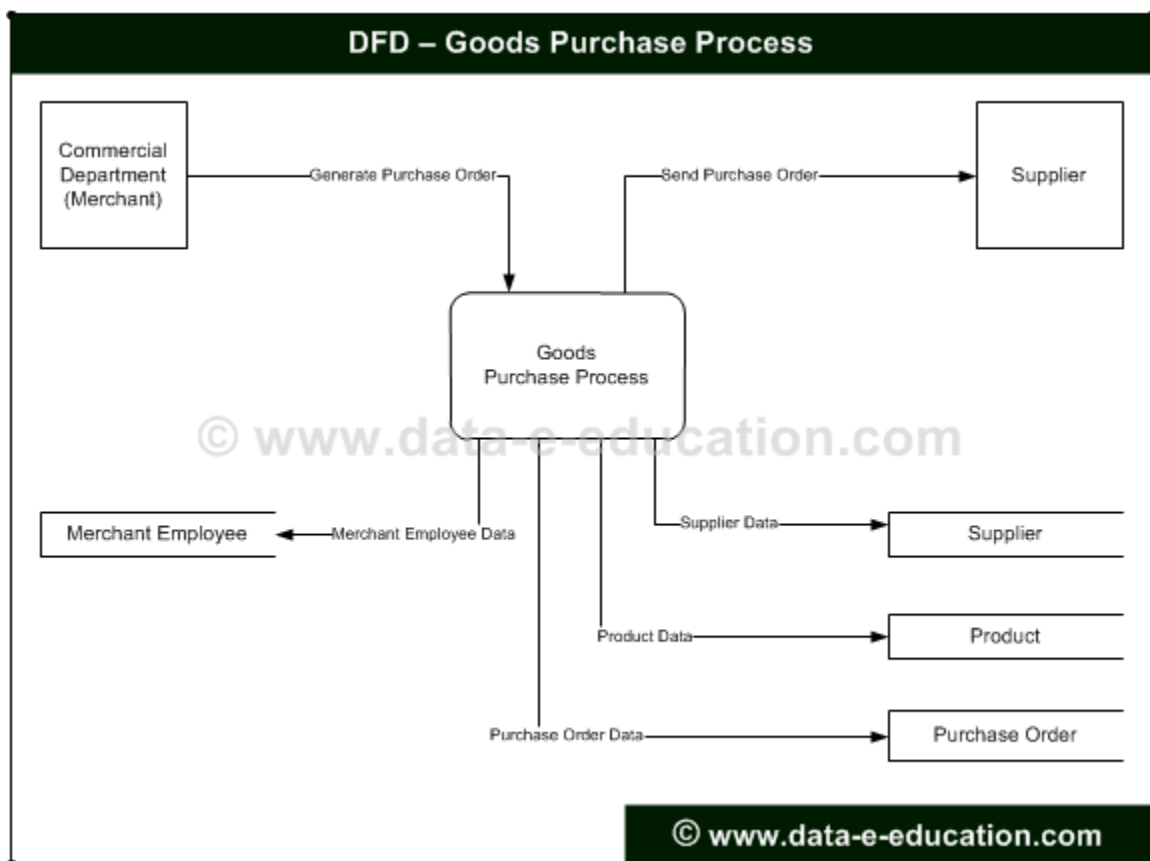
Periodically, the iPC e-Market Inc., Sales Employee should check the Online Order Enquiry from www.ipc-e-market.com web site. The Sales Employee should validate the Customer Online Order Enquiry and then send the Quotation to the validated Customer via Email.

The Customer should confirm the Sales Order and reply the Sales Employee Email with Product Delivery Date, Customer Billing and Product Shipping Address to iPC e-Market Inc., The Sales Employee should generate Purchase Request Form and send the form to Merchant Employee. The following Data Flow Diagram is re-present you about Customer Validation and Quotation Process with Data File Information.



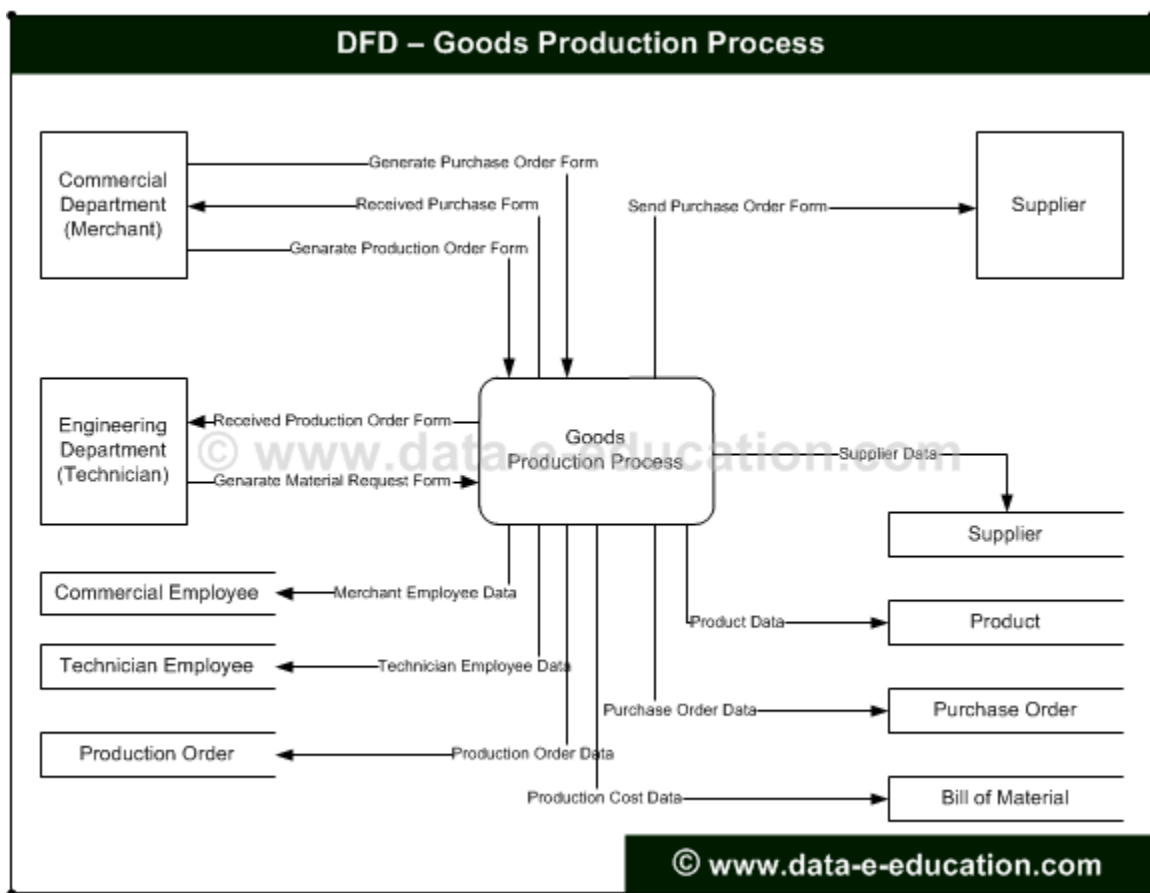
Goods Purchase Process

The iPC e-Market Inc., Merchant Employee is receive Purchase Request Form from Sales Employee or Technician. According to the Customer Sales Order Request, the Merchant Employee should generate Purchase Order Form and send to Computer Manufacturer Company. The following Data Flow Diagram is re-present you about Goods Purchase Process with Data File Information.



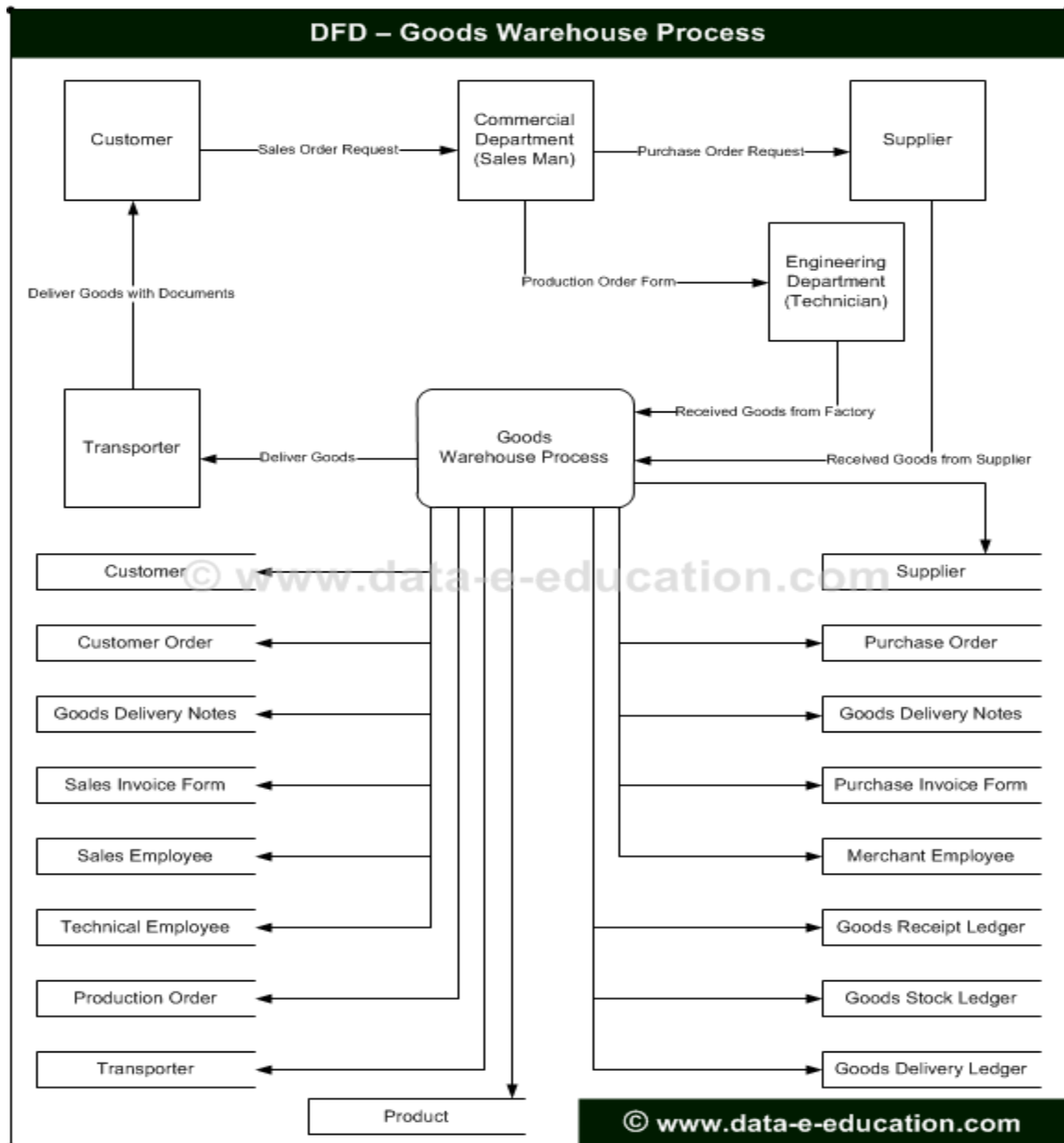
Goods Production Process

When, the Customer wants to buy an assemble computer(s), the Merchant Employee should generate a Production Order Form and send to Technical & Service engineering Department. The Technician should generate a Material Request Form and send to Merchant. Then, Merchant Employee should generate Purchase Order Form and send to Computer Manufacturer Company or Computer Part Supplier. The following Data Flow Diagram is re-present you about Goods Production Process with Data File Information.



Goods Warehouse Process

The Merchant send Purchase Order Request Form to Supplier or Computer Manufacture Company. The Warehouse Manager should receive the Product or Part with Supplier Goods Delivery Notes and Purchase Invoice Form. This Information should help to generate iPC e-Market Inc., Liability Report.



The above Data Flow Diagram is re-presenting you about Goods Warehouse Process with Data File Information.

When, the Customer wants to buy an assemble computer(s), the Merchant Employee should generate a Computer Production Request Form to the iPC e-Market Inc., Technical & Service Engineering Team. After complete the assemble work, the Technician delivers the Computer(s) to the Warehouse.

The Warehouse Manager should send the Branded Product or Assembly Computer to the Customer with Goods Delivery Notes and Sales Invoice Form through Transporter. This Information should help to generate iPC e-Market Inc., Bill of Outstanding Report.

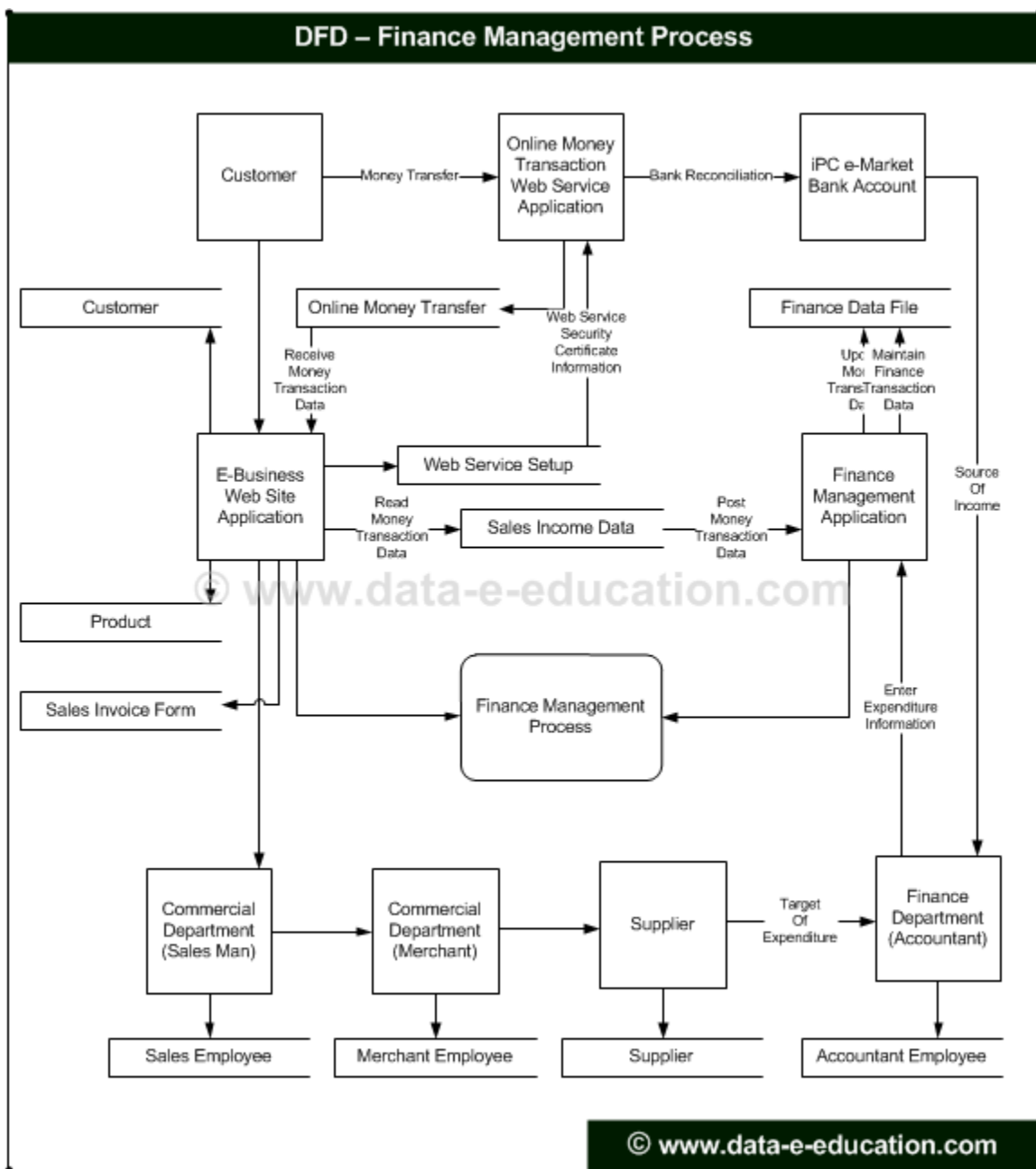
Finance Management Process

www.ipc-e-market.com web site is integrates with Third Party Online Money Transfer Web Service Application that maintain Sales Income Information in their Database and the Information can access through www.ipc-e-market.com.

When, the Customer should confirm the Sales Order and then the Customer should transfer the Product Purchase Amount to iPC e-Market Inc., Bank Account from the Customer validate Credit / Debit Card with Posted Date. The Payment Posted Date should match with Product Delivery Date.

iPC e-Market Inc., is using Customized Financial Management Application. Periodically, the Sales Income Information should post in the Financial Management Application in XML Data File Format.

The following Data Flow Diagram is re-present you about iPC e-Market Inc., Finance Management System with Intermediate XML Data File Information.



IPC Management Reports

IPC e-Market Inc., is generates the following MIS Reports from the Database.

01. Region Wise Sales Report.
02. Product Wise Sales Report.
03. Employee Wise Sales Report.
04. Sales Order Delivery Status Report.
05. Sales and Bill Outstanding Report.
06. Purchase and Liability Report.
07. Sales Invoice Form.
08. Goods Delivery Note.

Region Wise Sales Report is helps to analyze regional wise high and low product sales information. Product Wise Sales Report is helps to analyze high and low product sales information. Employee Wise Sales Report is helps to analyze sales employee wise high and low product sales and generate incentive and appreciate email information.

Sales Order Delivery Status Report is helps to analyze the Sales Order Status like Product Delivered or Not, Pending Sales Order or Manufacture Status Report. Sales and Bill Outstanding Report is helps to identify the company financial outstanding amount information from New and Existing Online Sales Order Enquiry.

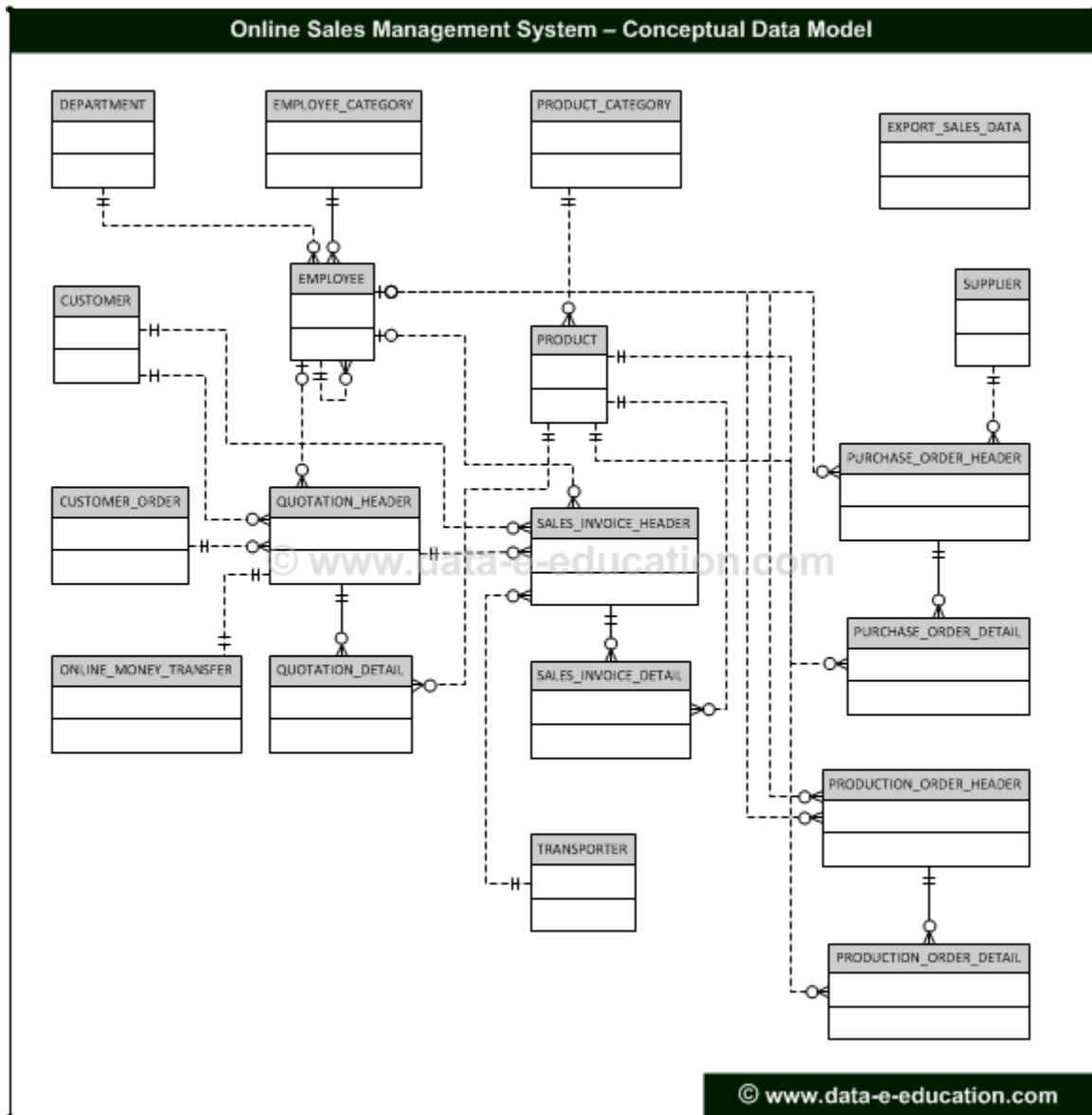
This report generate through Target Delivery Date and Post Paid Date against the Sales Order. Purchase and Liability Report is helps to identify the company financial liability amount information. This report generate through Purchase Due Date against the Purchase Order Transaction.

Sales Invoice Form is helps to send Sales Order Invoice Detail Information to the Customer with Product. Goods Delivery Note is helps to Transporter about the Product Shipping Information.

Conceptual Data Model

Conceptual Data Model is a System Analytical Tool in the Entity Relationship Model that used to define a Business Process Flow based on Business Information. Conceptual Data Model is helps to identify and defines a Business Entities with Degree of Relationship, Connectivity and Cardinality of Relationships and then Types of Relationships.

The following Conceptual Data Model is defines an "Online Sales Management System".



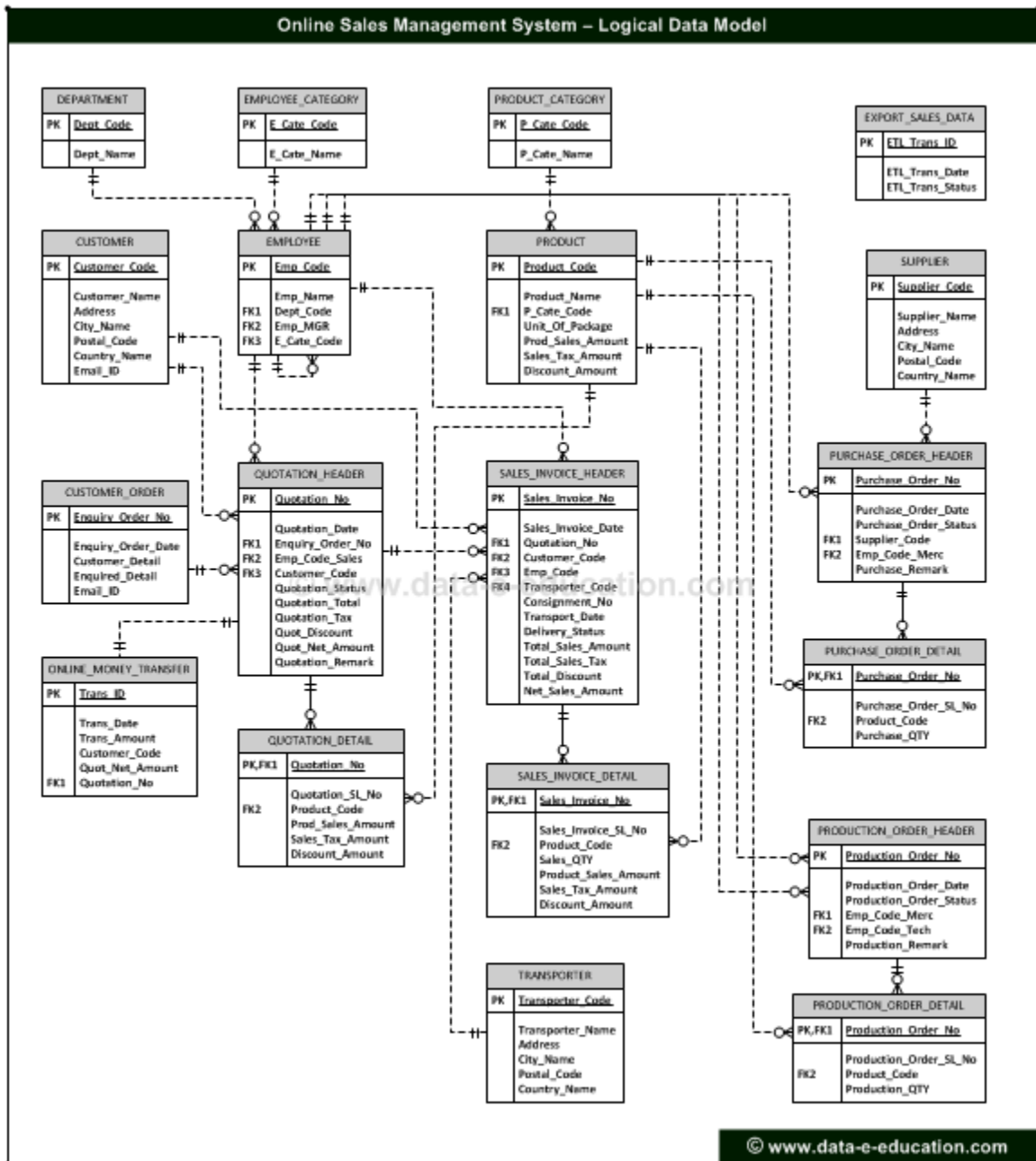
Directly, the complete Business Entities Relationships cannot implement in the Relational Database Model. Relational Database Model is support Binary and Unary Relationships that does not support Ternary and N-ary Relationships between Entities.

An actual, Conceptual Data Model must be analyze and redesign with Generalization Hierarchical Entity, Associate Entity and Eliminate Redundant Relationships between Entities. An improved, Conceptual Data Model is simplifies to design Logical and Physical Data Model.

Logical Data Model

Logical Data Model is a System Analytical Tool in the Entity Relationship Model that used to define a Business Process Flow and Logical Database Structure with Entities, Relationships, Attributes and Domain Rules. Logical Data Model is an extension of Conceptual Data Model that helps to design Physical Database Structure.

Logical Data Model must examine with Normalization Rules that helps to authenticate the Relational Database Structure. The following Logical Data Model is defines an "Online Sales Management System".



Logical Data Model is an independent of Database Technology that helps to design specific Physical Database Structure. Logical Data Model is used to analyze and improve Business Process Flow and Optimize Database Structure that helps to Technical and Non-Technical People in the Organization.

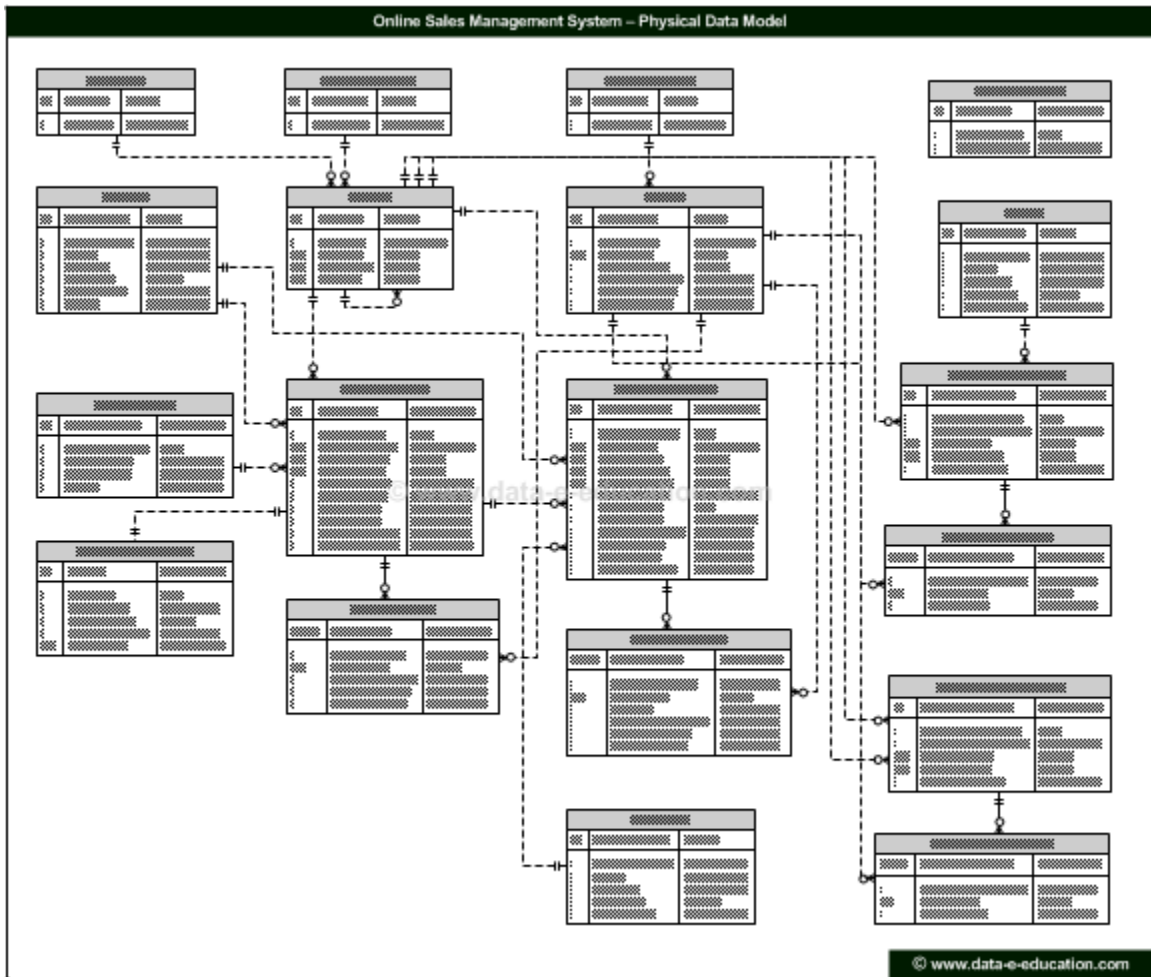
Physical Data Model

Physical Data Model is used to define an Application's Database Structure with Database Space, Segment, Block, Partition, Abbreviation, Glossary, Table, Column, Domain Type, Domain Size, Domain Constraint, Key Constraint, Referential Integrity Constraint, Stored Procedure, Trigger, Function and Index Data Objects.

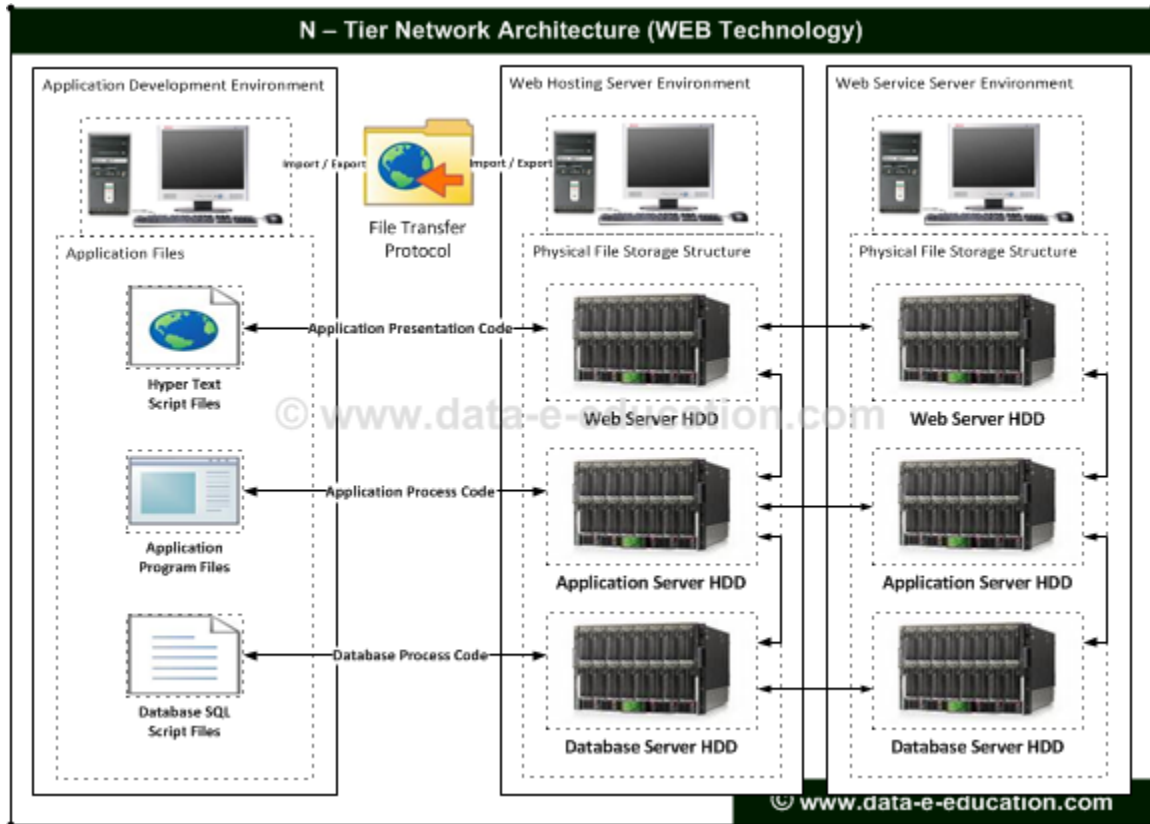
Physical Data Model is an extension of Logical Data Model that helps to create Physical Database Structure. Physical Data Model can transform into Database Report and SQL Script File through CASE Tool Application.

Database Report is used to analyze Database Structure and Optimize Database Operation.

The following Physical Data Model is defines an "Online Sales Management System".



N - Tier Network Architecture

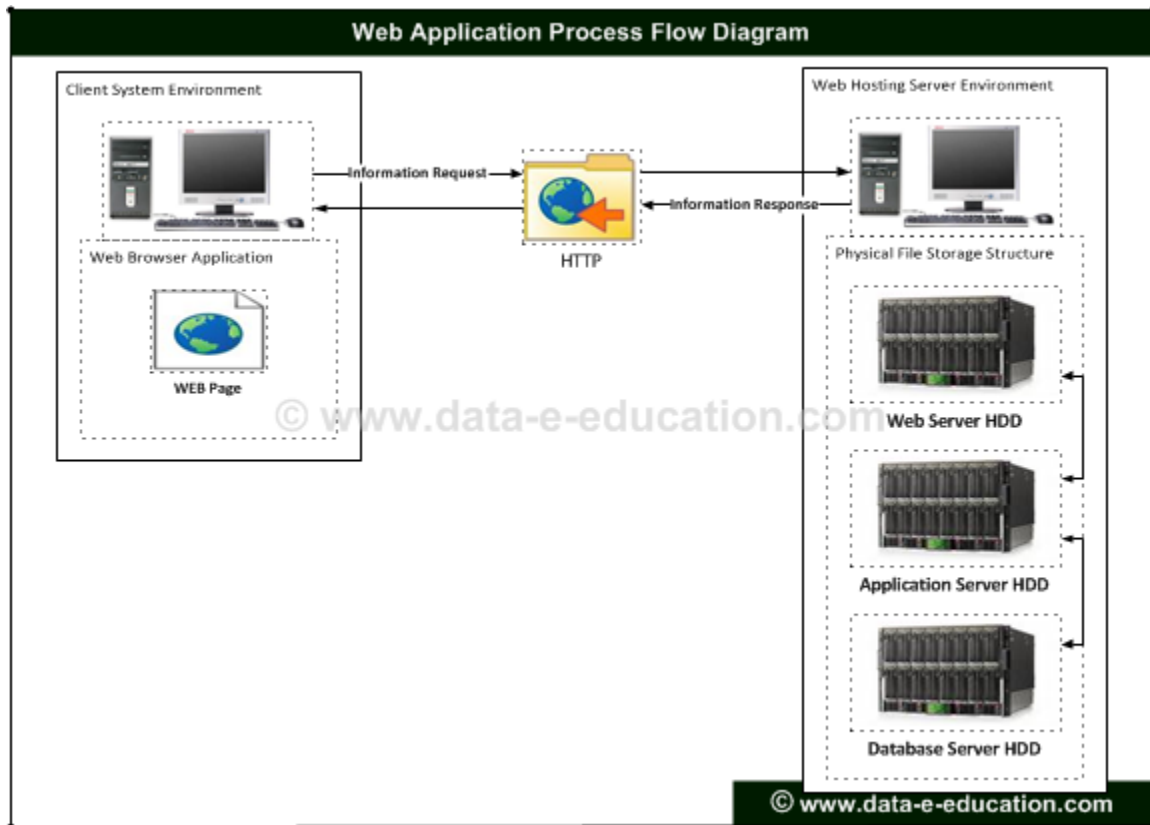


N - Tier Client Server Architecture is a Distributed Application Architecture in the Computer Network Environment that helps to distribute Application Process work loads between the Client Computer into Server Computer. Server Computer deployed with Web Server, Application Server and Database.

FTP, File Transfer Protocol is developed based on Client Server Network Architecture that helps to upload or download files from Web Site Design or Web Application Development Environment Computer into Host Server Computer to publish the Web Site and Web Application on the Internet.

Web Service is a standardized approach that helps to combine a common business procedure and distribute business data among two different applications on Internet. www.ipc-e-market.com is integrates with Third Party Online Money Transaction Web Service Application that maintain Sales Income Information in their Database and the Information can access through www.ipc-e-market.com.

Application Process Diagram



www.ipc-e-market.com is developed in Object Oriented Programming Language and integrated with Relational Database Management System to maintain Business Information. Web Pages, Application Component Files and Database Script Files are implemented in the Server System that access through Client Computer System.

Web Browser is an Application Program that helps to display web page on the Computer and helps to interact with World Wide Web. Web Browser is uses HTTP to send request and receive a web page from Web Server. Web Browser is uses FTP to upload and download web page from Web Server. The most popular web browser applications are Netscape Navigator, Internet Explorer, Opera, Mozilla Firefox and Google Chrome.

Web Server is a Computer or Hardware Machine that install with Operating System and Web Server Application along with TCP/IP and Internet Protocols. Web Server is maintaining Hyper Text Transfer Protocol and File Transfer Protocol requests along with Email, Server Side Program, Web Security and Search Engine Application on the Internet.

Application Server is a Framework that developed with collection of component files to maintain Web Application on the Internet. Application Server is helps to communicating among Internal and External Web Server, Application Server and Database Server to maintain information on the Internet.

Database Server is a standalone Computer that installed with Operating System and Database Management System Application. Database Server is communicating with Application Server or Web Server to maintain Business Information on the Internet. Database Management System is a Set of Computer Programs to Create and Maintain Business Information in the Database.